

KELSEY PLACE

14751 North Kelsey Street
Monroe, WA

*Four Spaces
Available*

102 - 1,307 sf

107 - 1501 sf

108 - 1300 sf

105 - 1505 sf

Information

Michael Fear
Coldwell Banker Commercial
1000 SE Everett Mall Way
Everett, WA 98208
425.356.9925
michaelfear@cbba.com



Suite 102 - 1,307 sf

Suite 105 - 1,505 sf

Suite 107 - 1,468 sf

Suite 108 - 1,300 sf

- Project is centered in the middle of new North Kelsey District adjacent to planned North Kelsey Village , anchored by Lowe's, and across street from Fred Meyer and Galaxy Theatre.

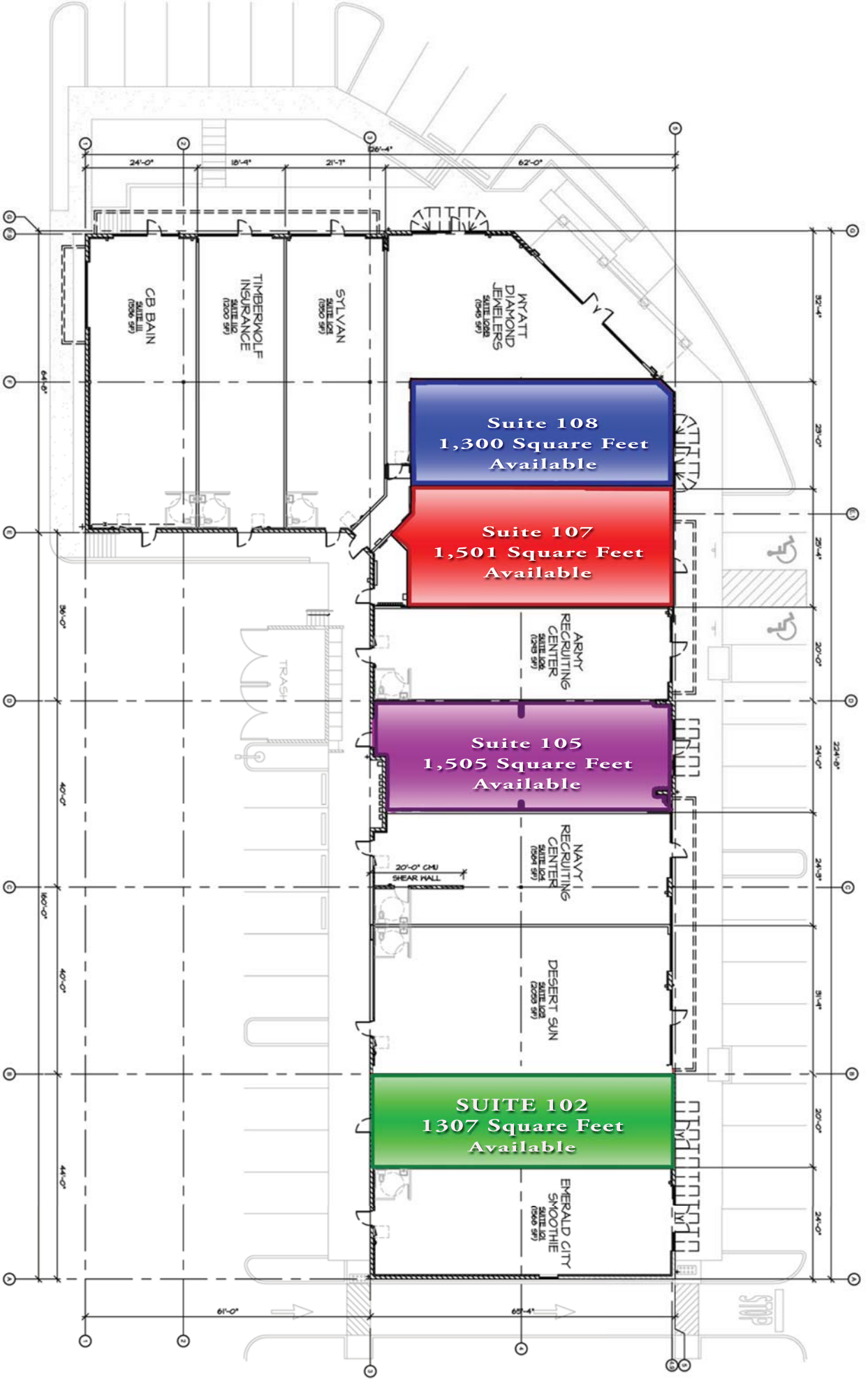
• Current Tenants include: Coldwell Banker, Timberwolf Insurance, Sylvan Learning Center, Wyatt's Diamond Jewellery, Army & Navy Recruiting Centers, Desert Sun Tanning, & Emerald City Smoothie

**COLDWELL
BANKER** 

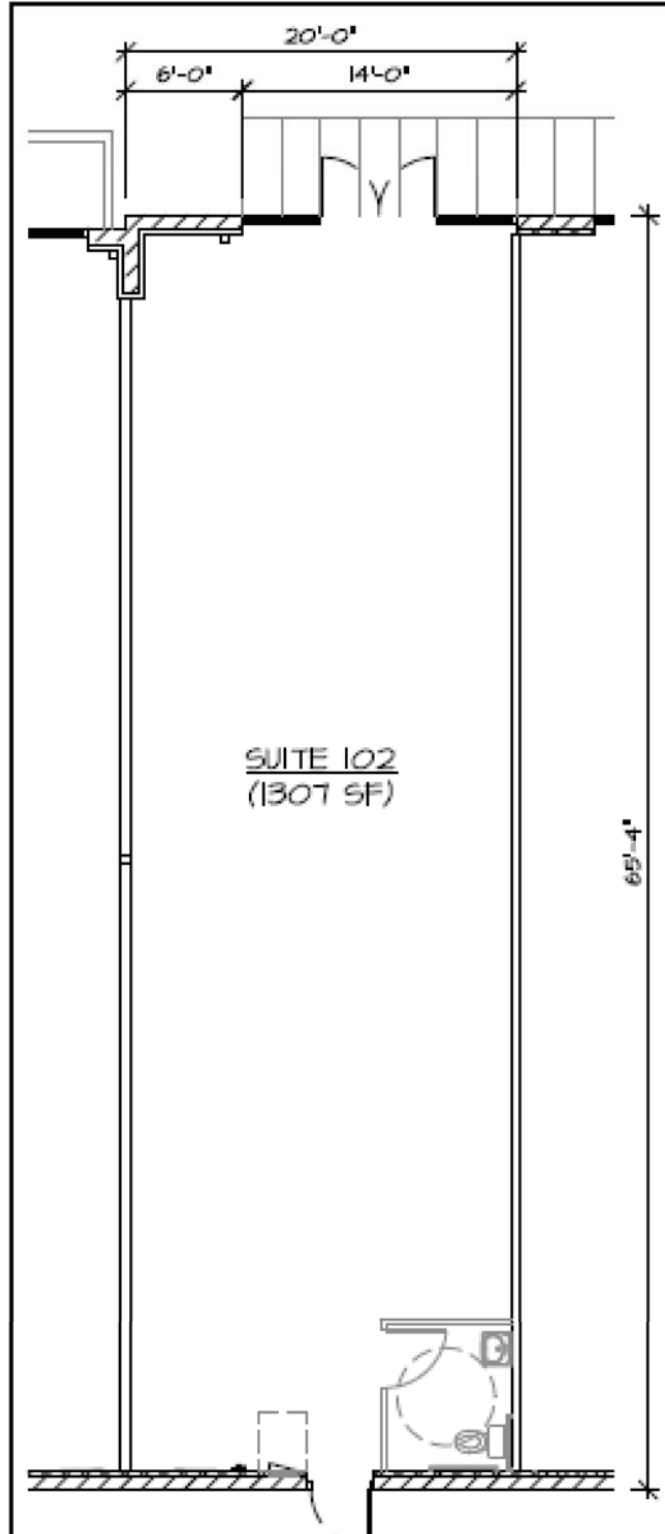
KELSEY PLACE
PHOTOS



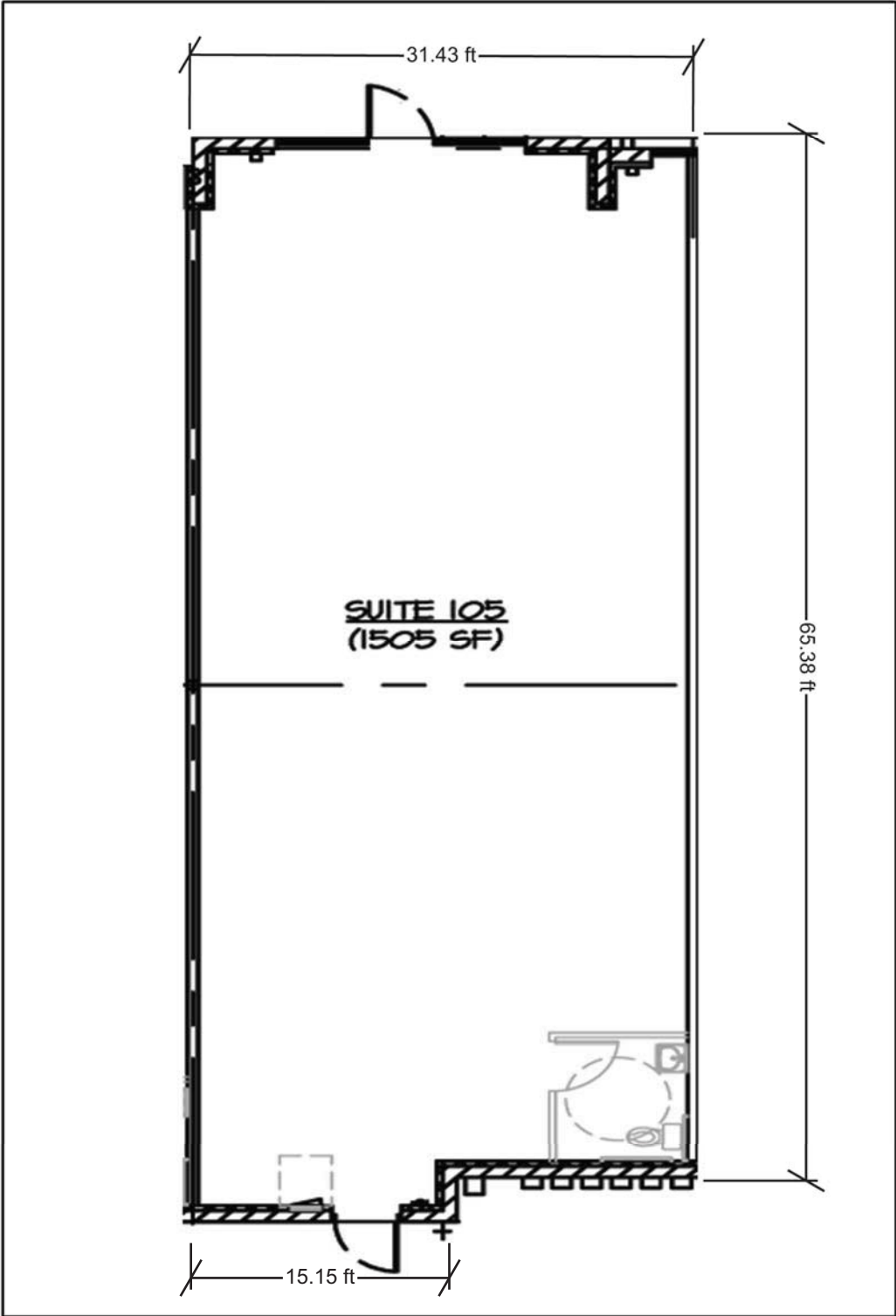
Kelsey Place - Tenant Plan
 Scale: 1" = 20'-0"



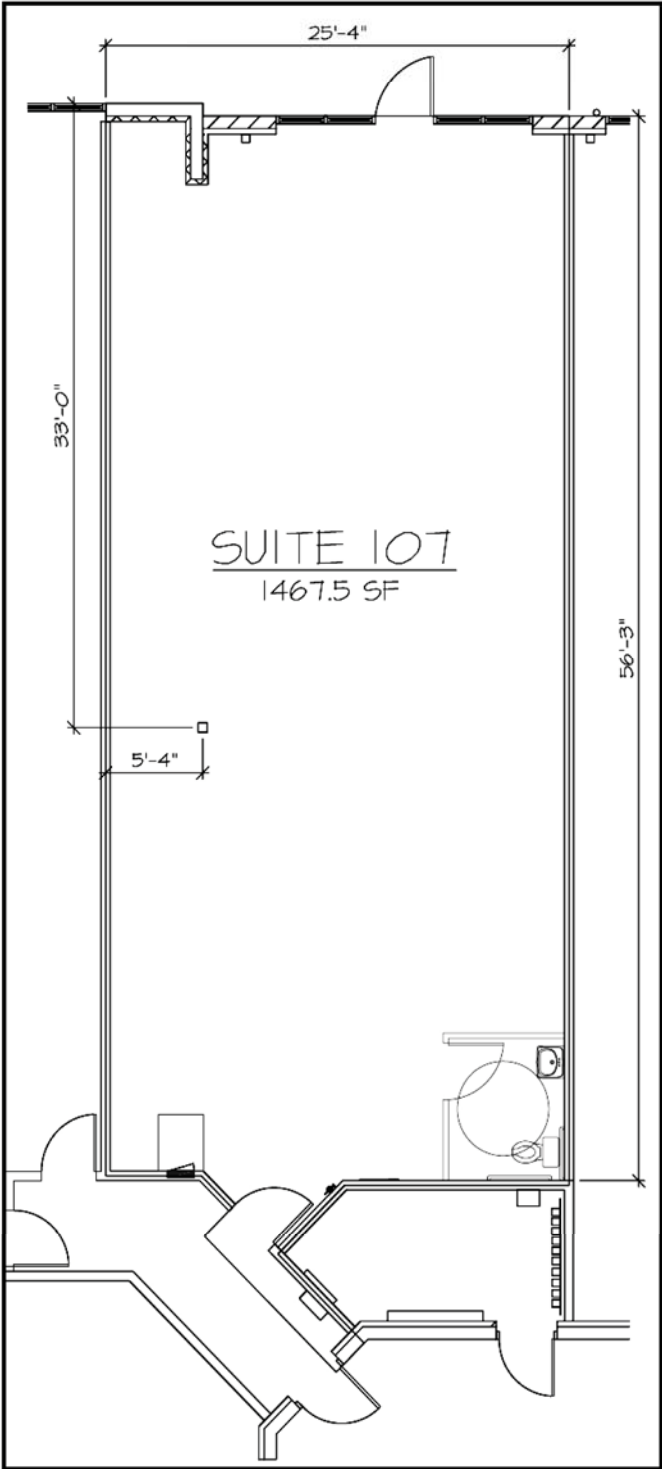
SUITE 102 FLOOR PLAN



SUITE 105 FLOOR PLAN



SUITE 107
FLOOR PLAN



SUITE 108 FLOOR PLAN

